

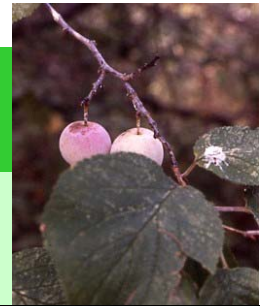
Trees are one of the most important investments you'll make in your landscape.

Answer these questions before choosing a tree:

- Is it a native or well adapted tree?
- What is the mature height and spread of the tree?
- What pest or diseases could the tree have?
- What are the trees soil requirements?
- What is the trees life expectancy?

Shade Trees

- * *Fast Growing* ***Native to Collin County*
- Acer grandidentatum - Bigtooth Maple - Ht. 25'-30'
- *Acer rubrum - Drummond Maple - Ht. 100'
- *Butula nigra - River Birch - ht.30'-50'
- **Sideroxylon lanuginosa - Chittamwood - 40'
- **Diospyros virginiana - Common Persimmon - Ht. 60'
- * **Fraxinus texensis - Texas Ash - Ht. 30' - 40'
- **Ilex decidua - Possum-haw - Ht. 15' - 20'
- * Juglans microcarpa - Nogalito -Ht. 30'
- * **Juniperus virginiana - Eastern Red Cedar - Ht. 30'-40'
- Liquidambar styraciflua - Sweetgum - Ht. 50' -60' In the east 120'
- Magnolia grandiflora - Magnolia - Ht. 50' dwarf varieties to 20'
- Prunus serotina—Black Cherry—Ht. 50' to 100'
- Quercus virginiana - Live Oak - Ht. 30' - 40'
- **Quercus macrocarpa - Bur Oak - Ht. 60' - 80'
- Quercus mixchauxii - Swamp Chestnut Oak - Ht. 60' - 80'
- **Quercus muhlenbergii - Chinquapin Oak - Ht. 40' - 60'
- Quercus polymorpha—Mexican White Oak—Ht. 50'
- **Quercus shumardii - Shumard Red Oak - Ht. 50' can reach 120'
- **Sapindus drummondii - Soapberry - Ht. 40' - 50'
- Taxodium distichum - Bald Cypress - Ht. 45'
- Taxodium mucronatum - Montezuma Cypress - Ht. 45' - 50'
- **Ulmus crassifolia - Cedar Elm - Ht. 30' - 60'



Specimen Trees

Acer grandidentatum - Bigtooth Maple - Ht. 25'-30'
Arbutus xalapensis - Texas Madrone - Ht. 20' - 30'
**Cercis canadensis – Eastern Redbud – Ht. 20'
Cercis canadensis var. mexicana - Mexican Redbud - Ht. 15'
**Cercis canadensis var. texensis - Texas Redbud - Ht. 15'
Cercis texensis 'Traveler' - Weeping Redbud - Ht. 4'
Chilopsis linearis - Desert Willow - Ht. 15' - 25'
Chinonanthus virginica - Fringe Tree - Ht. 15' - 25'
Crataegus opaca - Mayhaw - Ht. 40'
Cotinus obovatus - American Smoke Tree - Ht. 15'
Diosyros texensis - Texas Persimmon - Ht. 10' - 15'
Fraxinus greggii - Gregg's Ash - Ht. 20'
Ilex vomitoria var. pendula - Weeping Yaupon - Ht. 10' - 15'
Ilex vomitoria var. Golden Berry - Golden Berry Yaupon - Ht.12' - 15'
**Ilex decidua - Possum Haw Holly - Ht. 15' - 20'
Magnolia grandiflora 'Little Gem' - 'Coco' - Ht. 20' - 25'
**Prunus mexicana - Mexican Plum - Ht. 15' - 25'
Prunus serotina - Black Cherry - Ht. 50'
**Frangula caroliniana - Indian Cherry - Ht 15' to 20'
**Sophora affinis - Eve's Necklace - Ht. 15' - 25'
Leucaena retusa - Golden Ball Lead Tree - 12' - 15'
**Viburnum rufidulum - Rusty Blackhaw Viburnum - Ht. 15' - 20'



Trees for a small Garden

Acer leucoderm - Chalk Maple - Ht. 25'
Arbutus xalapensis - Texas Madrone - 20' - 30'
Cercis canadensis var. mexicana - Mexican Redbud - Ht. 15'
**Cercis canadensis texensis - Texas Redbud - Ht. 15' - 20'
Cercis canadensis 'Oklahoma' - Ht. - 20'
Chilopsis linearis - Dessert Willow - Ht. 15' - 25'
Chinonanthus virginica - Fringe Tree - Ht. 15' - 25'
Cotinus obovatus - American Smoke Tree - Ht. 15'
Diospyros texana - Texas Persimmon - Ht. 10' 15'
Fraxinus greggii - Gregg's Ash - Ht. 20'
Ilex vomitoria - Yaupon Holly - Ht. 12' - 15'
**Ilex decidua - Possum Haw Holly - Ht. 15' - 20'
Magnolia grandiflora 'Little Gem' - Little Gem Magnolia - Ht 20' - 25'
**Prosopis glandulosa - Honey Mesquite - Ht. 20' - 30'
Prunus mexicana - Mexican Plum - Ht. 15' - 20'
Quercus hinckleyi - Hinckely Oak - Ht. 3'
Quercus hypoleucoides - Silverleaf Oak - Ht. 20' - 30'
Quercus mohriana - Mohr Oak - Ht. 10' - 20'
Quercus pungens - Sandpaper Oak - Ht. 15' - 20'
Quercus pungens var. vaseyana -Vasey Oak - Ht. 25' - 35'
**Frangula caroliniana - Indian Cherry - Ht 15' to 20'
Sassafras albidum - Sassafras - Ht. 15' - 20'



Trees that tolerate some shade

Cercis canadensis - Eastern Redbud or Forest Pansy Redbud - Ht. 25'
Chionanthus virginica - Fringe Tree Ht. 15' - 25'
***Cornus drummondii* - Roughleaf Dogwood - Ht. 5' - 10'
***Frangula caroliniana* - Indian Cherry - Ht 15' to 20'
Hamamelis virginica— Witch Hazel—20'
Ilex vomitoria - Yaupon Holly - Ht. 12' 15'
***Prunus mexicana* - Mexican Plum - Ht. 15 ' 25'
Sassafras albidum - Sassafras - Ht. 15' - 20'
***Sophora affinis* - Eve's Necklace - 15' - 25'

Shrubs that can be pruned into small trees

**Acacia wrightii* - Wrights Acacia
Cercocarpus montanus - Mountain Mahogany
* ***Cephalanthus occidentalis* - Buttonbush
***Cornus drummondii* - Roughleaf Dogwood
Eysenhardtia texana - Texas Kidneywood
**Ilex vomitoria* - Yaupon Holly
Ilex vomitoria var. *pendula*—Weeping Yaupon
**Leucaena retusa* - Goldenball Lead Tree
Myrica cerifera - Wax Myrtle
Pistachia texana - Texas Pastiche
Prunus caroliniana - Cherry Laurel
***Rhamnus caroliniana* - Indian Cherry
**Rhus lanceolata* - Flam-Leaf Sumac
Rhus virens - Evergreen Sumac
Sophora secundiflora - Texas Mountain Laurel
Ugnadia speciosa - Mexican Buckeye
***Viburnum rufidulum* - Rusty Black Haw *Viburnum*

